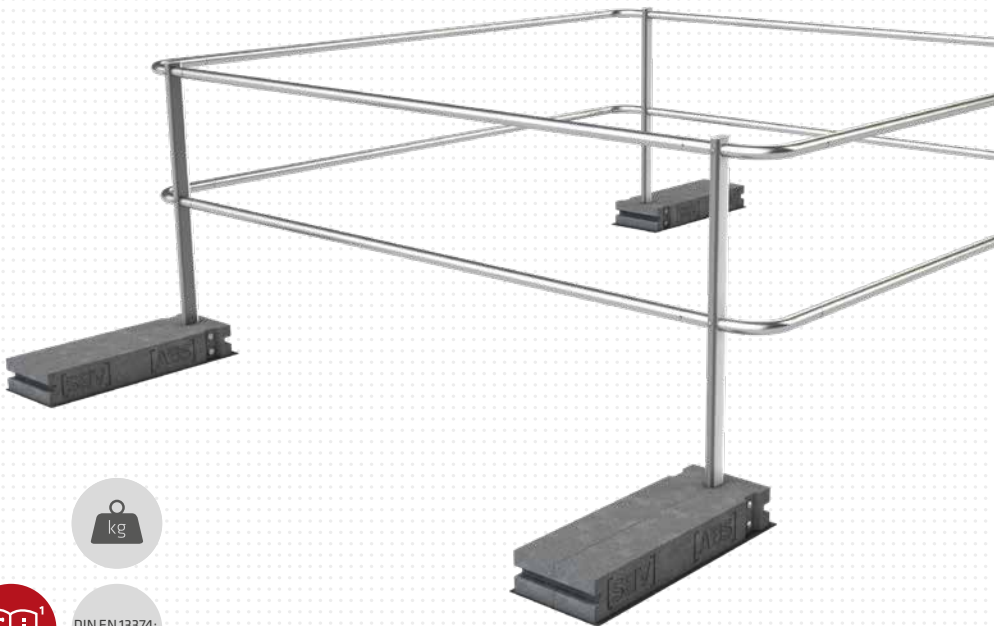


# ABS Dome OnTop Weight

SG-DOME-2,5-G-B



MoA 280-01



DIN EN 13374:  
2013, A

## Werkzeuge | Tools



## Sicherheitshinweise | Safety instructions



- DE** Montageanleitung beachten (1) und Sicherheitshinweise beachten (2).
- EN** Comply with the installation manual (1) and Comply with the safety instructions (2).
- FR** Respecter la notice de montage (1) and Respecter les consignes de sécurité (2).
- NL** Montagehandleiding in acht nemen (1) and Veiligheidsinstructies in acht nemen (2).
- BGR** Спазвайте инструкциите за монтаж (1) and Спазвайте инструкциите за безопасност (2).
- DK** Følg monteringsvejledningen (1) and Følg sikkerhedshenvisningerne (2).
- ET** järgida montaažijuhendit (1) and järgida ohutusjuhiseid (2).
- FI** Noudata asennusohjeita (1) and Noudata turvallisuusohjeita (2).
- IT** Rispettare le istruzioni di montaggio (1) and Rispettare le istruzioni di sicurezza (2).
- PL** Przestrzegać zaleceń instrukcji montażu (1) and Przestrzegać zasad bezpieczeństwa (2).
- SK** Dodržujte návod na montáž (1) and Dodržujte bezpečnostné pokyny (2).
- SL** Sledite navodilom za namestitve (1) and Sledite varnostnim navodilom (2).
- ES** Observar las instrucciones de montaje (1) and Observar las indicaciones de seguridad (2).
- CS** Dodržujte návod k montáži (1) and Dodržujte bezpečnostní pokyny (2).
- HU** Vegye figyelembe az összeszerelési útmutatót (1) and Vegye figyelembe a biztonsági utasításokat (2).

## Kontakte | Contact persons

### Vertrieb & Technische Beratung Sales & Technical Support

+49 (0) 28 32 - 972 81 - 0  
vertrieb@absturzicherung.de

### Schulung Training

+49 (0) 28 32 - 972 81 - 148  
schulung@absturzicherung.de

### Montagevorbereitung Assembly

+49 (0) 28 32 - 972 81 - 260  
service@absturzicherung.de

## Mustertypenschild | Sample label

**ABS SAFETY GMBH** 3  
Kevelaer, Germany  
info@absturzicherung.de  
www.absturzicherung.de

1
2

---

**Mustertypenschild /  
Sample only** 4

**Chargennummer /  
Batch number** 5

---

6 Normen / Standards -

7 Max. Nutzer gleichzeitig (DIN EN 795:2012)  
Max. No. of simultaneous users -

11 Modellnummer / Model number -

- -

- -

- -

8

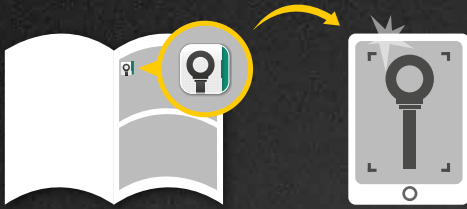
9

10



# Montageschritte dokumentieren

Document assembly step



[abs.lock-book.com](https://abs.lock-book.com)



**Nicht fallen lassen!**  
Do not drop!



**Nicht fallen lassen!**  
Do not drop!

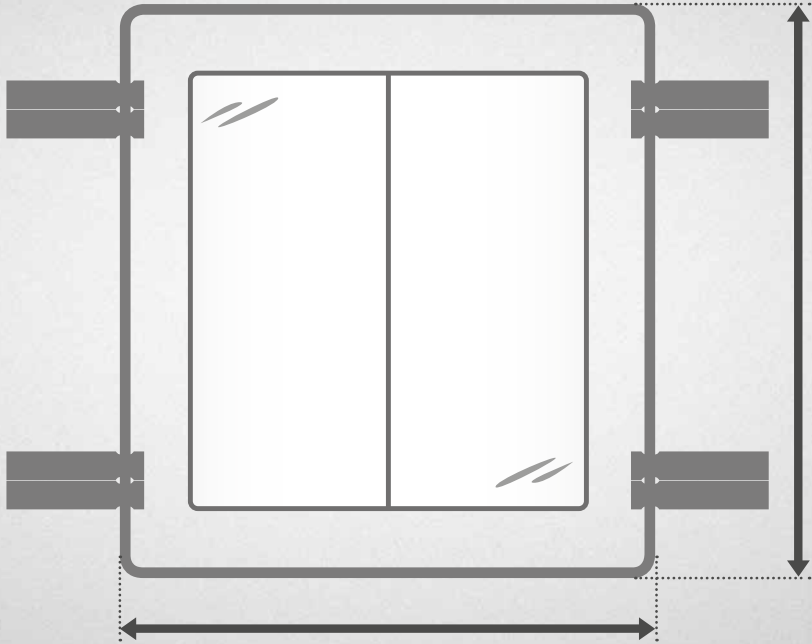


**Ebener Untergrund!**  
Even surface!



**Flach auflegen!**  
Put down flat!



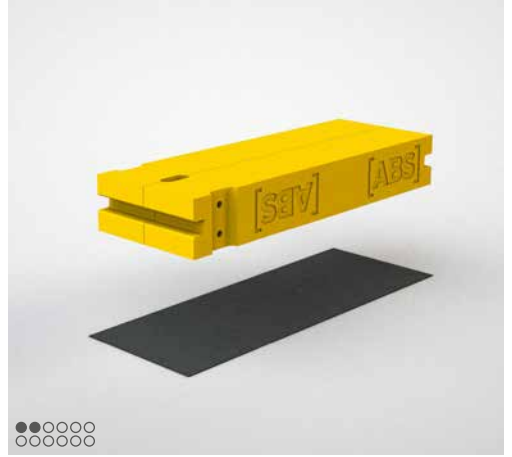
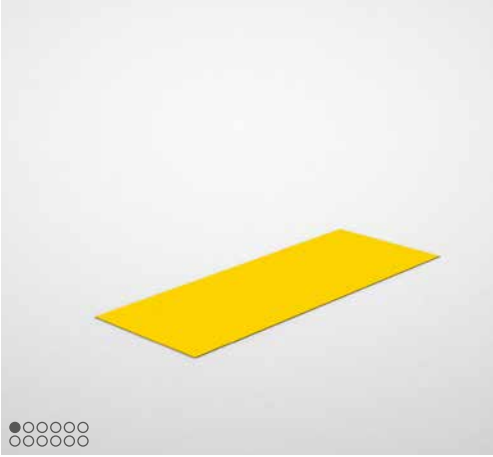


Optional

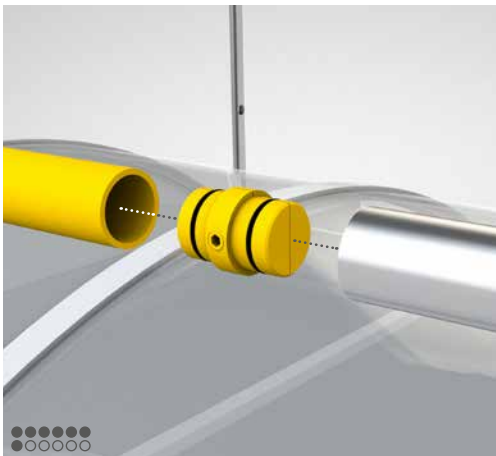
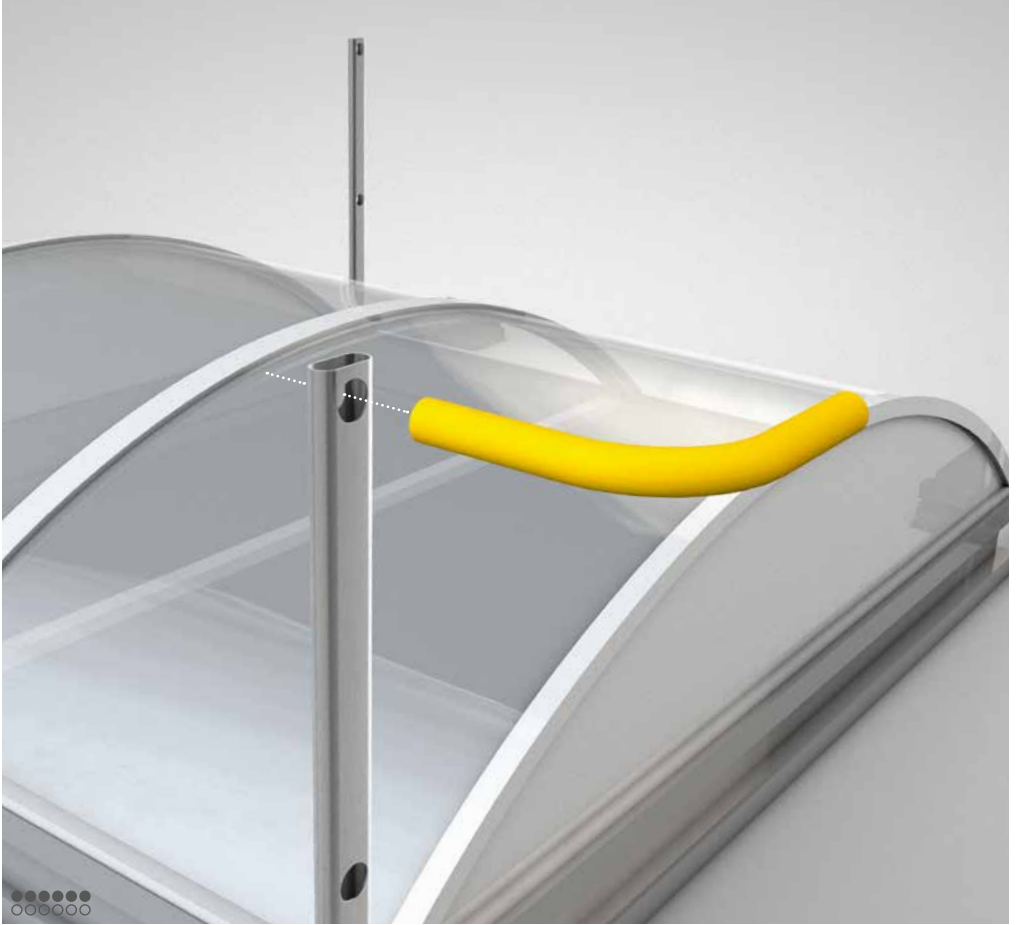


**Entgraten**  
Deburring

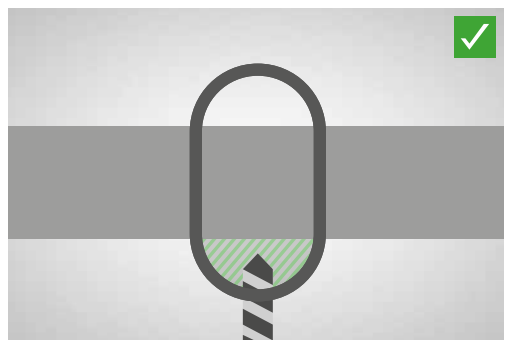




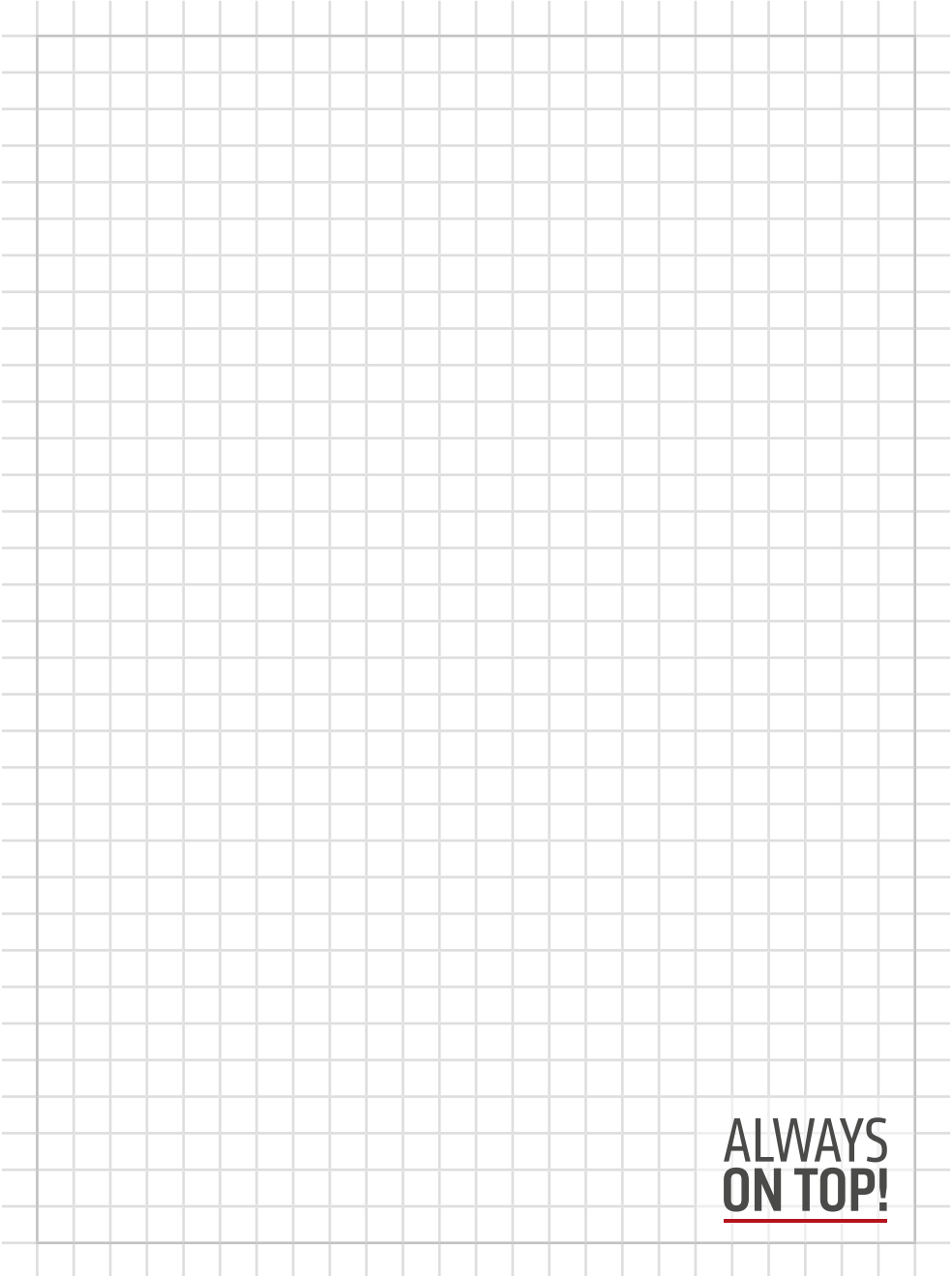












**ALWAYS  
ON TOP!**

# ALWAYS ON TOP!

## ABS Safety GmbH

Gewerbering 3  
D-47623 Kevelaer  
Germany

Tel.: +49 28 32 972 81 - 0  
Fax: +49 28 32 972 81 - 285

[info@absturzsicung.de](mailto:info@absturzsicung.de)

 [www.absturzsicung.de](http://www.absturzsicung.de)

 [.de/en](http://.de/en)

 [.de/fr](http://.de/fr)

 [.de/nl](http://.de/nl)

RS 11, Januar 2021



[instagram.com/abssafety](https://www.instagram.com/abssafety)



[youtube.com/abssafetygmbh](https://www.youtube.com/abssafetygmbh)



[facebook.com/ABS.Safety](https://www.facebook.com/ABS.Safety)